

Dream Medley Quilt 226

Tiffany Hayes, Needle in a Hayes Stack

Class Description

Intermediate

This quilt has a bit of a modern feel while utilizing a vertical layout.

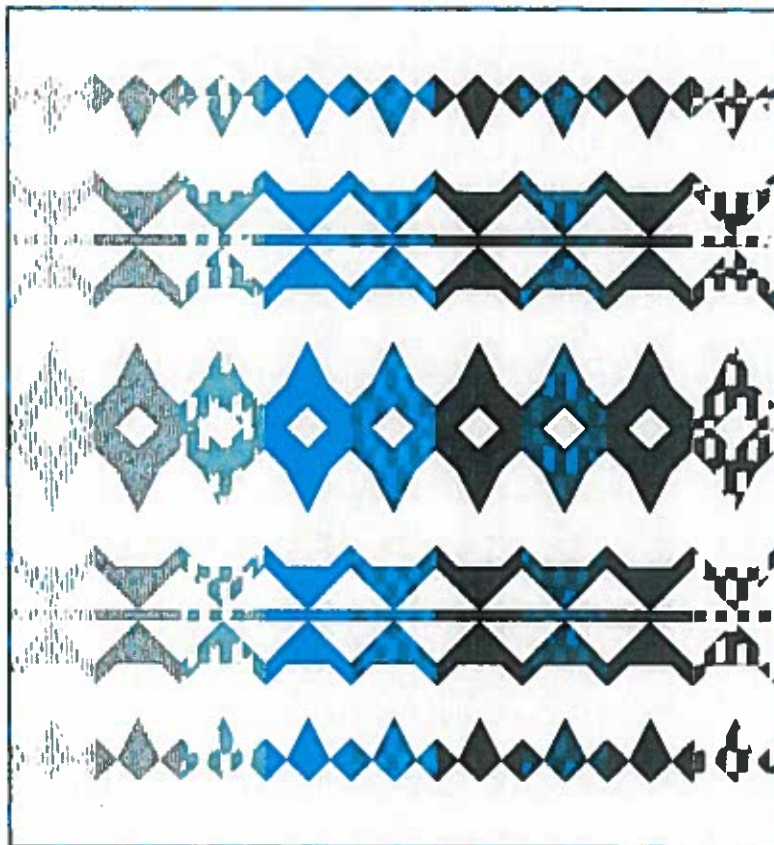
I use a technique called Goddess Quilting, making motion with various triangles.

This is a fat quarter friendly quilt!

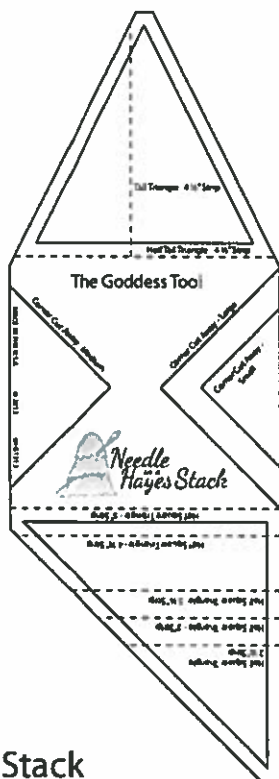
The Goddess Tool is used to create the shapes used in the blocks for this quilt.

Pattern Required: \$10.00

The Goddess Tool is Required: \$22.00



Quilt measures 72" x 82"



@NeedleinaHayesStack



@NeedleinaHayesStack



@Batikfreak



Needle
in a
Hayes Stack

NeedleinaHayesStack.biz

661-816-7037

What to Bring to Class:

Main Fabric - 2 Fat Quarters
(each fat quarter must measure
a minimum of 18" x 20")

Background Fabric: 1 yard

Fabric Requirements for Quilt:

Main Fabrics - 9 Fat Quarters
(each fat quarter must measure
a minimum of 18" x 20")

Background Fabric: 4 ½ yards

Binding Fabric : ¼ yard

Backing Fabric: 5 yards

Suggested Fat Quarter Bundle:

Dream Medley by Andover Fabrics



Sewing Supplies

Sewing Machine

Thread, Scissors, Pins, Seam Ripper

Rotary Cutter, Mat,

Acrylic Ruler (approx. 2 ½" x 6 ½")

That Purple Thang (optional)

The Goddess Tool

Dream Weaves Pattern



@NeedleinaHayesStack



@NeedleinaHayesStack



@Batikfreak



Needle
in a
Hayes Stack

NeedleinaHayesStack.biz

661-816-7037